



DATA SHEET FOR FLP CLEAN ROOM SWITCH SOCKET WITH TERMINAL CHAMBER

TECHNICAL DATA:

PRODUCT	: CAT. NO.- SS/OA/1010
ENCLOSURE	: FLAME PROOF (Ex -d), Gas Group IIA , IIB As per IS/IEC 60079-1 : 2014
PROTECTION	: WEATHER PROOF IP – 66 AS PER IS/IEC 60529:2001 (Reaffirmed 2014)
AREA & TEMP. CLASS	: Ex db IIA,IIB T6 Gb (EX tb / tc IIIC T85 C Db/Dc (ZONE 1 & 2 & Zone 21 & 22)
CERTIFICATION	: CIMFR, BIS, PESO
TEMPERATURE CLASS	: T6
MATERIAL	: DIE CAST ALUMINIUM ALLOY
FINISH	: EPOXY POWDER COATED SHADE AS PER IS : 5
EARTHING	: 1 No INTERNAL & 2 No's EXTERNAL
HARDWARE	: STAINLESS STEEL
GASKET	: 'O' RING ENDLESS GASKET NEOPRENE / SILICON
NAME PLATE	: SS NAME PLATE CUM WARNING PLATE
ENTRIES	: 2 NOS AT BOTTOM AND 1 NO AT PLUG TOP OF M20/ ½” NPT/ EQUIVALENT / UP TO M25
FLAP	: RUBBER FLAP WILL BE PROVIDED FOR SOCKET
TERMINALS	: 4 NOS OF 2.5SQ.MM CLIP ON TYPE TERMINAL / UPTO 6 SQ MM
INTERLOCK	: INTERLOCKING ARRANGEMENT SUCH AS THE PLUG CAN NOT BE REMOVED WHEN THE SWITCH IS IN “ON” POSITION AND CAN BE WITHDRAW ONLY WHEN THE SWITCH IS IN “OFF” POSITION.
CLEAN ROOM	: M.S. BOX WITH STAINLESS STEEL COVER

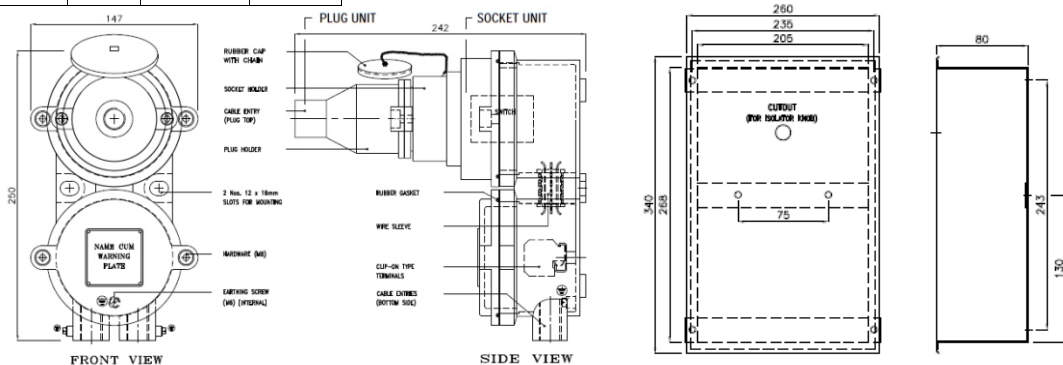


OPTIONS

SR.NO	PARTICULAR	OPTIONS
1.	MATERIAL OF CONSTRUCTION	STAINLESS STEEL
2.	GLAND & PLUG	BRASS / SS / ALUMINIUM
3.	COLOUR SHADE	631, 632, 355, 7031, 7032 etc.
4.	CANOPY	M.S POWDER COATED / FRP / GI

SELECTION CHART

SR.NO	SWITCH RATING	POLE	VOLTAGE	PIN
1.	16 AMP	DP	240 V AC	2P + E
2.	16 AMP	TP	415 V AC	3P + E
3.	16 AMP	TPN	415 V AC	4P + E
4.	20 AMP	DP	240 V AC	2P + E
5.	20 AMP	TP	415 V AC	3P + E
6.	20 AMP	TPN	415 V AC	4P + E
7.	25 AMP	DP	240 V AC	2P + E
8.	25 AMP	TP	415 V AC	3P + E
9.	25 AMP	TPN	415 V AC	4P + E
10.	32 AMP	DP	240 V AC	2P + E
11.	32 AMP	TP	415 V AC	3P + E
12.	32 AMP	TPN	415 V AC	4P + E



SS304 COVER WITH M.S. BOX
CUTOUT SIZE IN WALL : (w) 380 x (h) 180 x (d)85mm